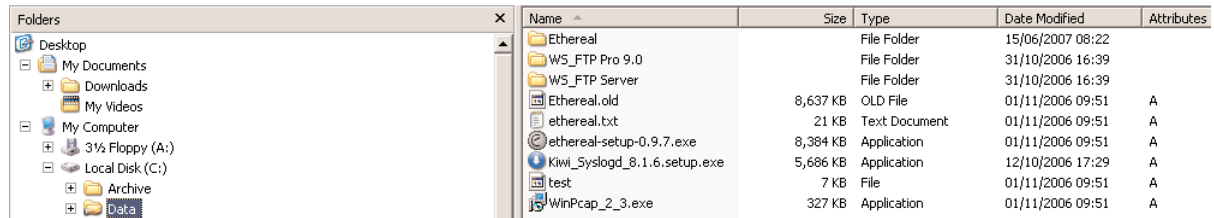


Backup Windows 2003 Server to ReadyNAS[®] using Integrated Backup Manager

Using the integrated backup manager, you can configure your ReadyNAS® to backup Windows 2003 in just a few easy steps:

Step 1 – Create a shared folder on the 2003 server where the source data resides



A folder named **"Data"** has been created.

Step 2 – Select a backup source

In the ReadyNAS Console:

- Select **"Backup"**, then the **"Add a New Backup Job"** tab.
- Select a backup source. Enter its configuration information and your login credentials.

STEP 1 - Select backup source

Specify what you want to backup. The path you want to backup can be in a share on this device (a USB disk attached to this device will show up as a share) or located remotely. The backup source and destination cannot both be remote shares.

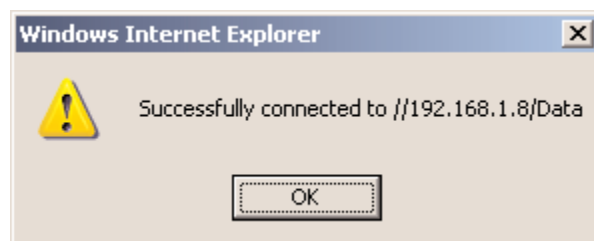
Remote: Windows (Archive Bit) Host: 192.168.1.8

Path: Data

Login: Administrator Password: ●●●●●●

Note: NETGEAR recommends using the "Windows (Archive Bit)" protocol to backup from a Windows 2003 system. However, if you use the "Windows (Timestamp)" protocol, it's important to ensure that SMB signing is disabled on the Windows 2003 Server.

After all backup job information is complete, select "Test connection" to ensure everything is working. If successful, the following will appear:



Step 3 – Select a backup destination

- Select a backup destination. Enter its configuration information and your login credentials.

STEP 2 - Select backup destination



Specify where you want your backup data saved. As with the backup source, the destination path can be a share on this device or a path on a remote PC or device.

Share: backup ▾ Host:

Path:

Login: Password:

Once complete, you can determine the backup schedule and backup options. The backup job can be run by a set schedule, or manually started by clicking **Go**.

Enable	Job	Source Destination	When	Status	Logs		
<input checked="" type="checkbox"/>	001	//192.168.1.8/Data [backup]	Weekdays Every 24 hr between 00-23	Ready	 	<input type="button" value="Go"/>	<input type="button" value="Delete"/>

The status of the completed backup job can be viewed by clicking the **View logs** icon.

The Backup Button can also be associated with the backup job.